

Operating instructions

Settings of the Network Enabler Administrator for the BACCom

1. Installation of the Network Enabler Administrator (NEA)

Run program "neadm_setup_Ver2.10_Build_07072710.exe" and follow the instructions.

2. Open NEA, set IP address and COM port.

After opening the program the BACCOM has to be searched first. Run a *Broadcast Search* (Menu: Configuration/Broadcast Search) (fig. 1).

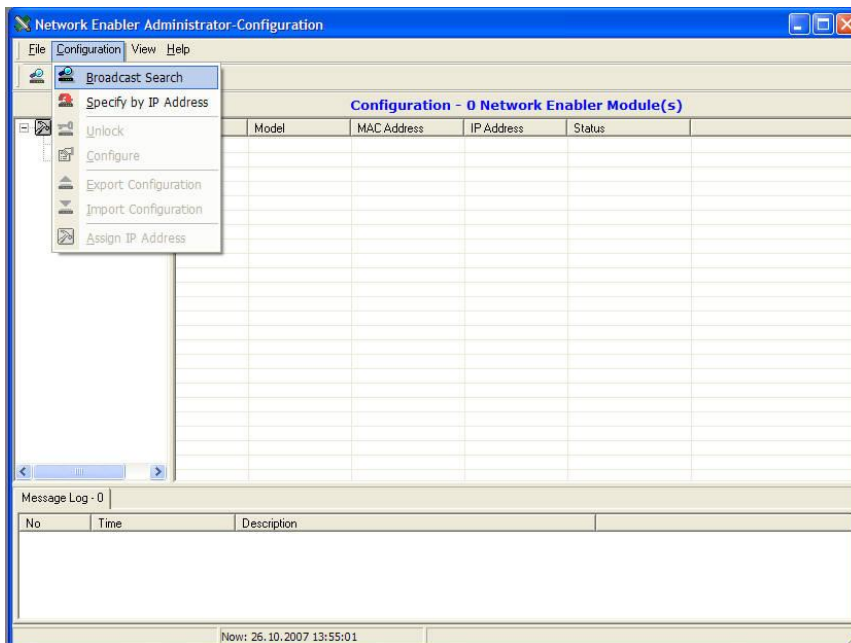


Fig 1

Operating instructions

If the BACCom is correctly connected a Model NE-4110S will be found (fig 2)

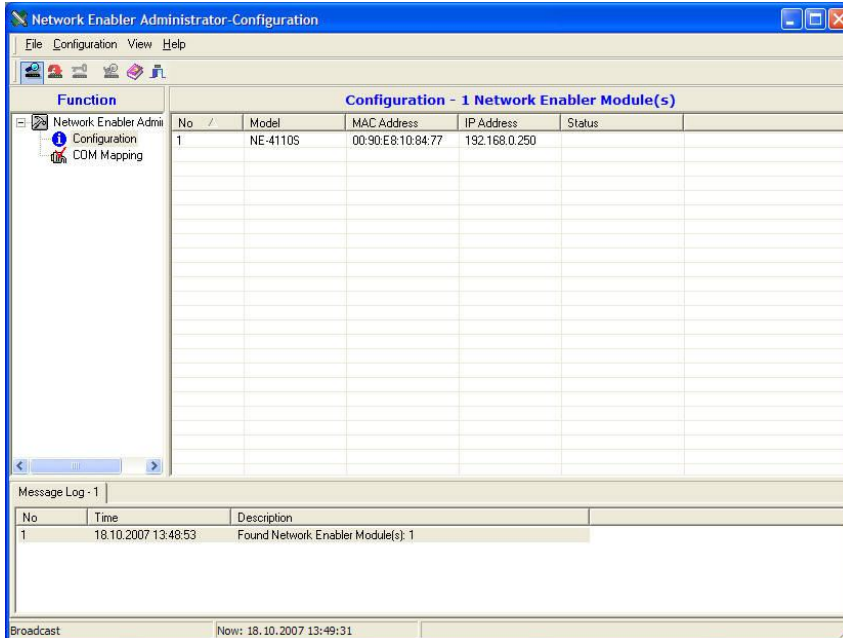


Fig 2

A configuration mask is opened by a double-click on the line with the corresponding module. (fig. 3)

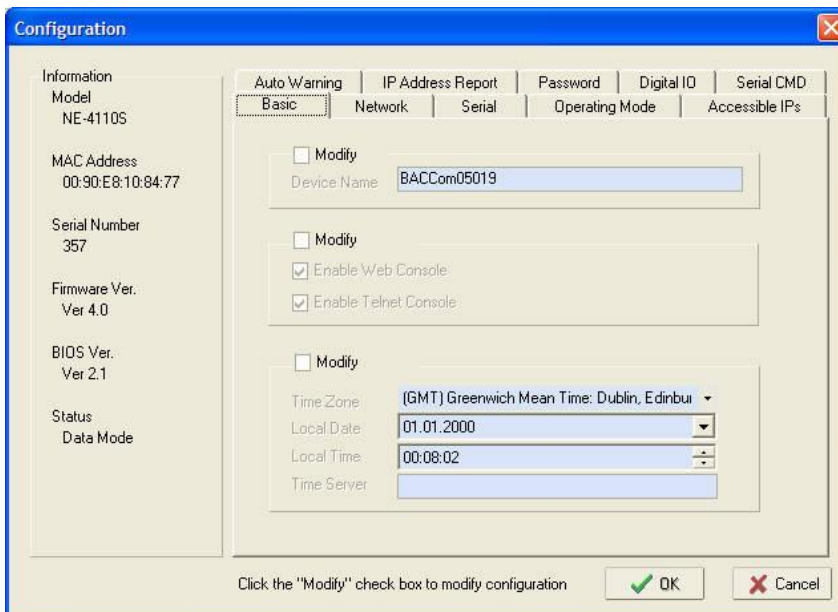


Fig 3

Operating instructions

To set the network parameters go to the tab *Network* and click the checkbox *Modify* (Fig 4).

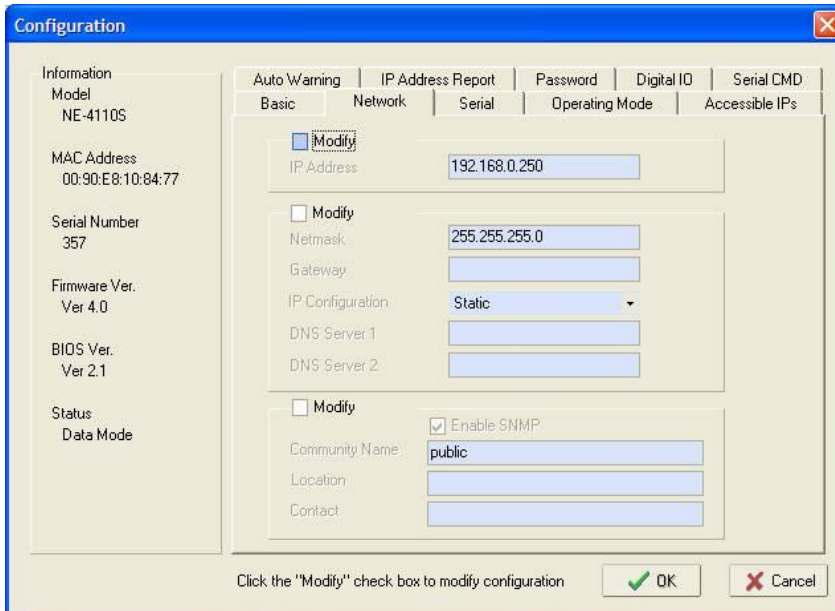


Fig 4

Then the network address can be changed. Should other network parameters have to be changed also click on the corresponding *Modify* checkbox and enter the desired values.

Leave the configuration mask with *OK*; the new network parameters are transferred.



Attention:

For the proper function no settings other than the network settings may be changed!

Operating instructions

After the configuration has been stored in the BACCom, go to *COM Mapping* in the left *Function* field and then in the menu *COM Mapping* to *Add Target* (fig 5). A window opens (fig. 6) in which you select the module shown.

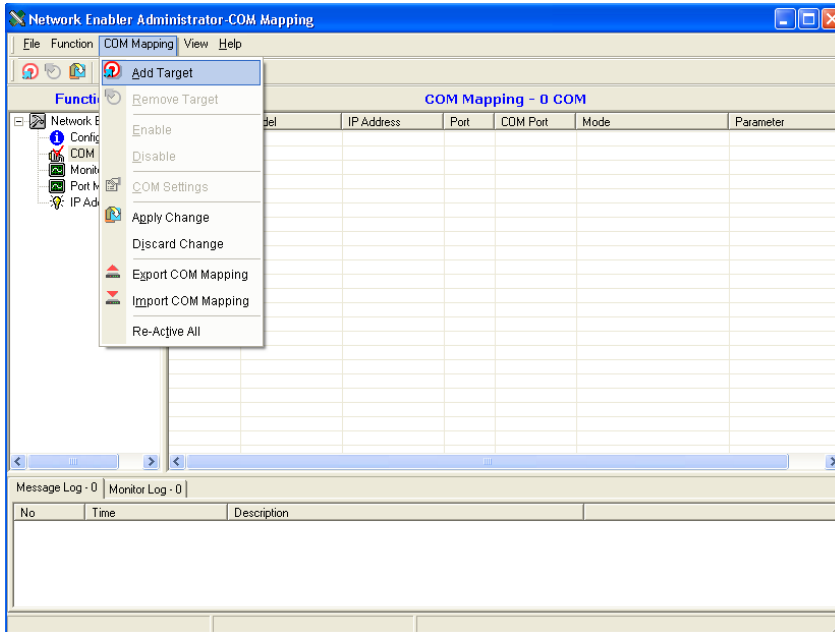


Fig 5

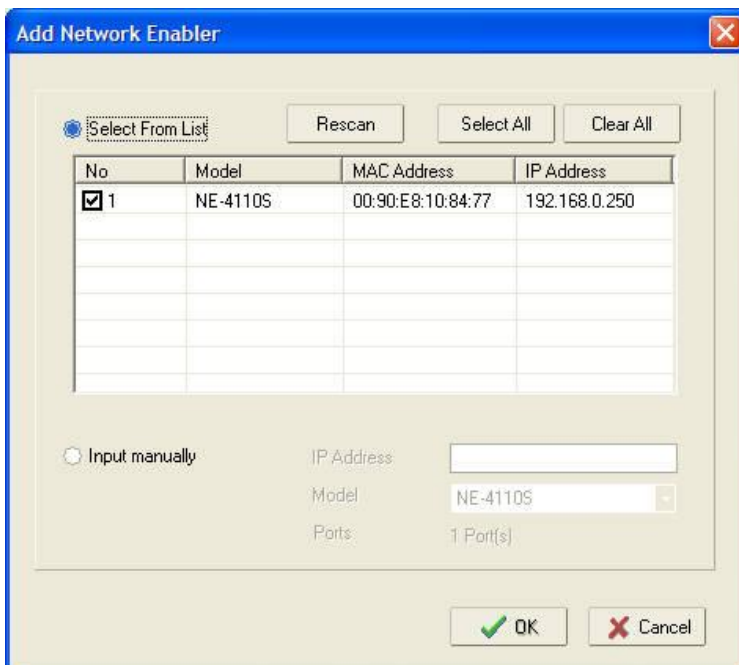


Fig 6

Operating instructions

When you close the window with OK the module is shown in the NEA (Pict7).

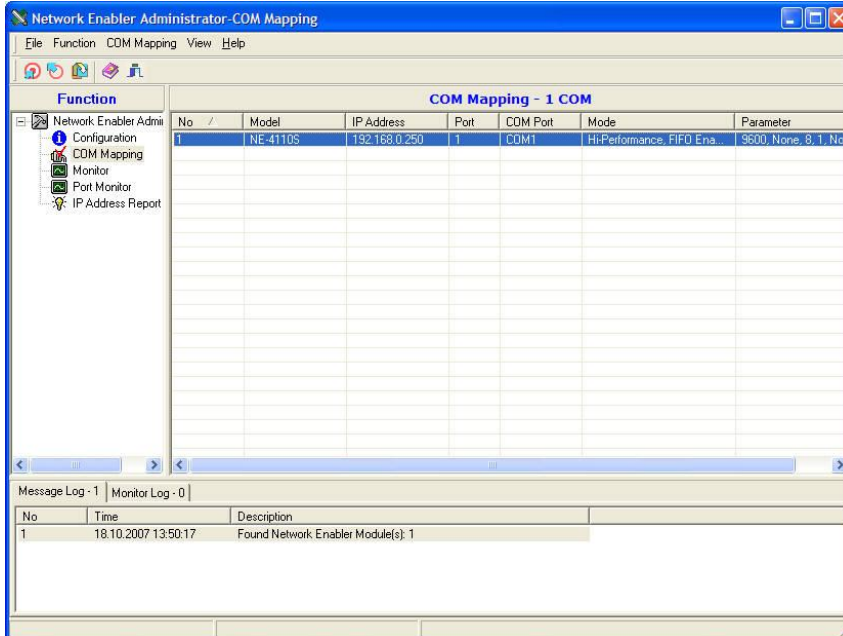


Fig 7

By a double-click on the module you can now select the COM port number (fig. 8) and set the parameters of the serial interface (Tab: *Serial Parameters*) as shown in fig. 9.

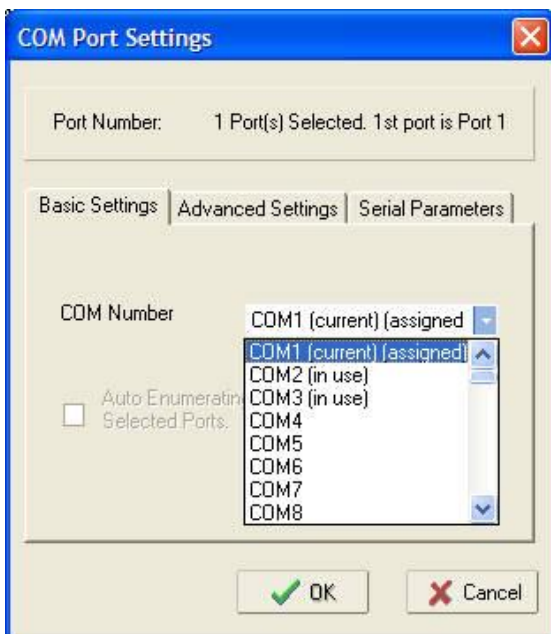


Fig. 8

Operating instructions

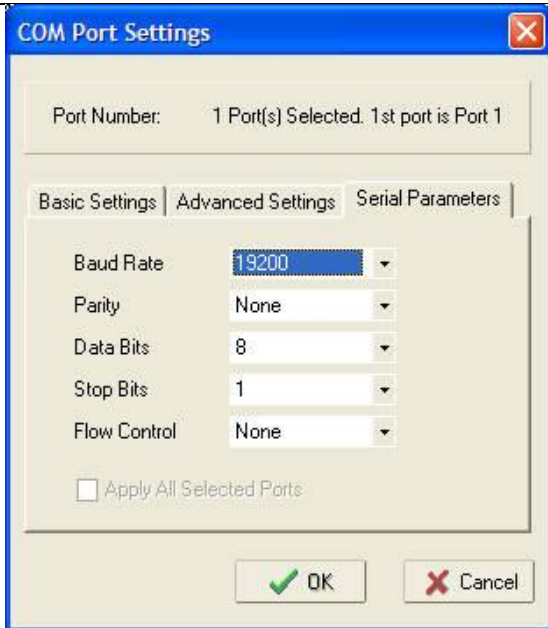


Fig 9

Accept the settings just made with OK and you can now close the NEA. Hereby the new virtual interface is created in your system.

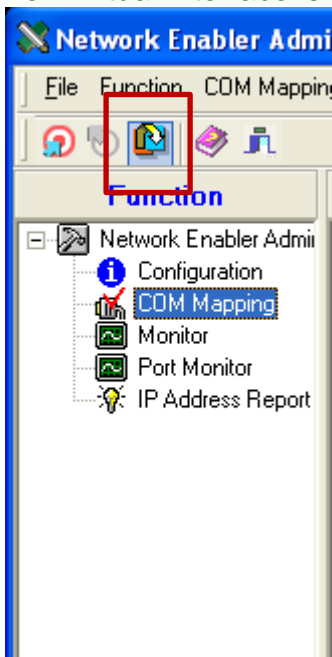


Fig 10

To apply all the changes please select **COM Mapping** then on the icon **apply changes** to save the new settings (fig. 10).

If you set the *Communication* switch on the BACCom to Ethernet you can now use the software as accustomed with the new interface.